



# 2014 IHSB Country Lanes 012214

Oil Per Board: 55 uL

Oil Pattern Distance: 42 Feet

Volume Oil Total: 28.38 mL

Total Boards Crossed: 516 Boards

Forward Oil Total:

16.5 mL  
300 Boards

Reverse Oil Total:

11.88 mL  
216 Boards

Notes

	Start	Stop	Loads	Speed	Crossed	Start	End	Feet	T.Oil
1	2L	2R	3	14	111	0.0	3.9	3.9	6105
2	7L	7R	1	14	27	3.9	5.8	1.9	1485
3	8L	8R	1	14	25	5.8	7.7	1.9	1375
4	9L	9R	1	14	23	7.7	9.6	1.9	1265
5	10L	10R	2	14	42	9.6	13.5	3.9	2310
6	11L	11R	2	18	38	13.5	18.6	5.1	2090
7	12L	12R	2	18	34	18.6	23.7	5.1	1870
8	2L	2R	0	18	0	23.7	30.0	6.3	0
9	2L	2R	0	22	0	30.0	36.0	6.0	0
10	2L	2R	0	26	0	36.0	42.0	6.0	0

	Start	Stop	Loads	Speed	Crossed	Start	End	Feet	T.Oil
1	2L	2R	0	30	0	42.0	35.0	-7.0	0
2	11L	11R	5	22	95	35.0	19.5	-15.5	5225
3	10L	10R	4	18	84	19.5	9.3	-10.2	4620
4	2L	2R	1	10	37	9.3	7.9	-1.4	2035
5	2L	2R	0	10	0	7.9	0.0	-7.9	0

Conditioner:  
Type In or Select One

TransferType:  
Type In or Select One

Forward



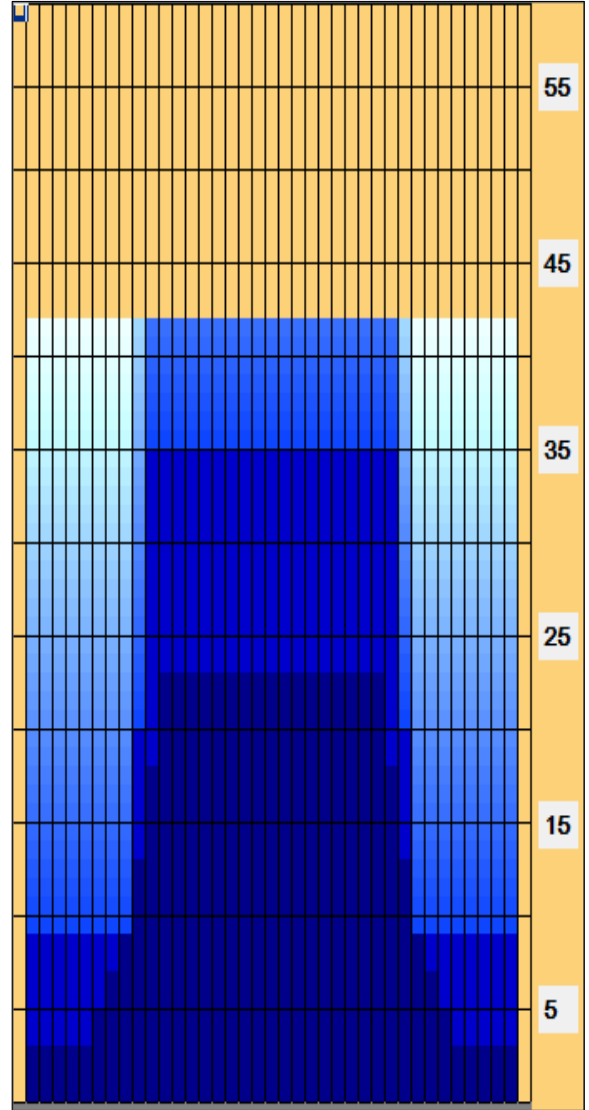
Reverse



Combined



Buff



Arrow Zone Ratios

Item	2-5L:16L-20	6-10L:16-20	11-15L:16L-20	16L-20:20-16R	16L-20:20-16R	20-16R:15-11R	20-16R:10-6R	20-16R:5-2R
ul Arrow	220	385	1188	1210	1210	1188	385	220
Zone Ratio	5.5	3.14	1.02	1	1	1.02	3.14	5.5

Track Zone Ratios

Item	3L-7L:18L-18R	8L-12L:18L-18R	13L-17L:18L-18R	18L-18R:17R-13R	18L-18R:12R-8R	18L-18R:7R-3R
Description	Outside Track:Middle	Middle Track:Middle	Inside Track:Middle	Middle: Inside Track	Middle:Middle Track	Middle:Outside Track
Track Zone Ratio	5.24	1.62	1	1	1.62	5.24

