



2014 INDIANA HIGH SCHOOL BOWLING PRACTICE GUIDE

H2M Management, in consultation and cooperation with Indiana High School Bowling, is pleased to be the lane maintenance partner of the 2014 IHSB Championship Tournament.

The oil pattern to be used throughout the 2014 Tournament (From Regionals through the State Finals) is intended to play exactly the same each weekend from center to center across the state.

Since the amount of variables are too many to list on this document (lane surface, type of oil, type of cleaner, humidity, temperature), there can be times when the lanes will play different from one center to the other. Our goal, in 2014, is to try and minimize this effect.

In order to do this, each bowling center will have a slightly different pattern in order for the end result, the ball reaction, to be the same.

The process of building each pattern included every bowling center filling out a detailed questionnaire regarding their lanes, lane maintenance equipment, oil, cleaner, lane maintenance process, and other items which affect how the pattern will be designed for that specific bowling center.

The best players, coaches, and teams do not overly concern themselves with trying to practice on a specific pattern, as the same pattern laid down in a different bowling center, will yield different results.

Since the specific lane pattern data will not be released at the tournament site, we invite you to practice on a pattern which will play similar to the 2014 IHSB Championship Pattern. The pattern, "2007 Weber Cup – Day 3" is attached as a separate document and can be viewed online at www.kegel.net.

To all of the athletes proudly representing their schools, on behalf of H2M Management and Indiana High School Bowling, GOOD LUCK!

Sincerely,

Nicholas J. Hoagland
Director, Business Affairs
H2M Management

Steve Kunkel
Championship Manager
Indiana High School Bowling

2007 Weber Cup - Day 3



Oil Per Board: 50 mL Oil Pattern Distance: 41 Feet Volume Oil Total: 24.05 mL Total Boards Crossed: 481 Boards

Forward Oil Total: 12.75 mL Reverse Oil Total: 11.3 mL
 Forward Boards Crossed: 255 Boards Reverse Boards Crossed: 226 Boards

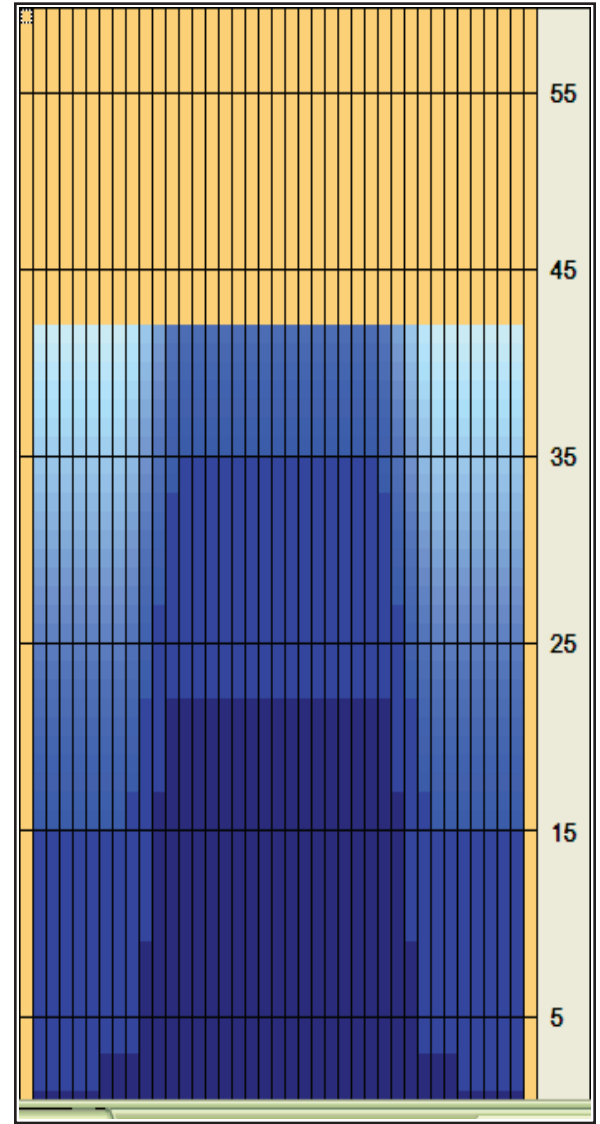
	Start	Stop	Loads	Speed	Crossed	Start	End	Feet	T.Oil
1	2L	2R	2	10	74	0.0	1.4	1.4	3,700
2	7L	7R	1	14	27	1.4	3.3	1.9	1350
3	10L	10R	3	14	63	3.3	9.2	5.9	3150
4	11L	11R	3	18	57	9.2	16.8	7.6	2850
5	12L	12R	2	18	34	16.8	21.9	5.1	1700
6	2L	2R	0	18	0	21.9	28.0	6.1	0
7	2L	2R	0	26	0	28.0	34.0	6.0	0
8	2L	2R	0	30	0	34.0	41.0	7.0	0

Navigation: Forward Reverse More Info

	Start	Stop	Loads	Speed	Crossed	Start	End	Feet	T.Oil
1	2L	2R	0	30	0	41.0	34.0	-7.0	0
2	13L	13R	1	18	15	34.0	31.5	-2.5	750
3	12L	12R	2	18	34	31.5	26.4	-5.1	1700
4	11L	11R	2	18	38	26.4	21.3	-5.1	1900
5	10L	10R	2	18	42	21.3	16.2	-5.1	2100
6	9L	9R	1	18	23	16.2	13.7	-2.5	1150
7	2L	2R	2	14	74	13.7	9.8	-3.9	3700
8	2L	2R	0	10	0	9.8	0.0	-9.8	0

Navigation: Forward Reverse More Info

Forward Oil
 Reverse Oil
 Combined Oil
 Buff Area



Arrow Zone Ratios

Item	2-5L:16L-20	6-10L:16:-20	11-15L:16L-20	16L-20:20-16R	16L-20:20-16R	20-16R:15-11R	20-16R:10-6R	20-16R:5-2R
ml Arrow	200	310	990	1050	1050	990	310	200
Zone Ratio	5.25	3.39	1.06	1	1	1.06	3.39	5.25

Track Zone Ratios

Item	3L-7L:18L-18R	8L-12L:18L-18R	13L-17L:18L-18R	18L-18R:17R-13R	18L-18R:12R-8R	18L-18R:7R-3R
Description	Outside Track:Middle	Middle Track:Middle	Inside Track:Middle	Middle: Inside Track	Middle:Middle Track	Middle:Outside Track
Track Zone Ratio	5	1.81	1	1	1.81	5

